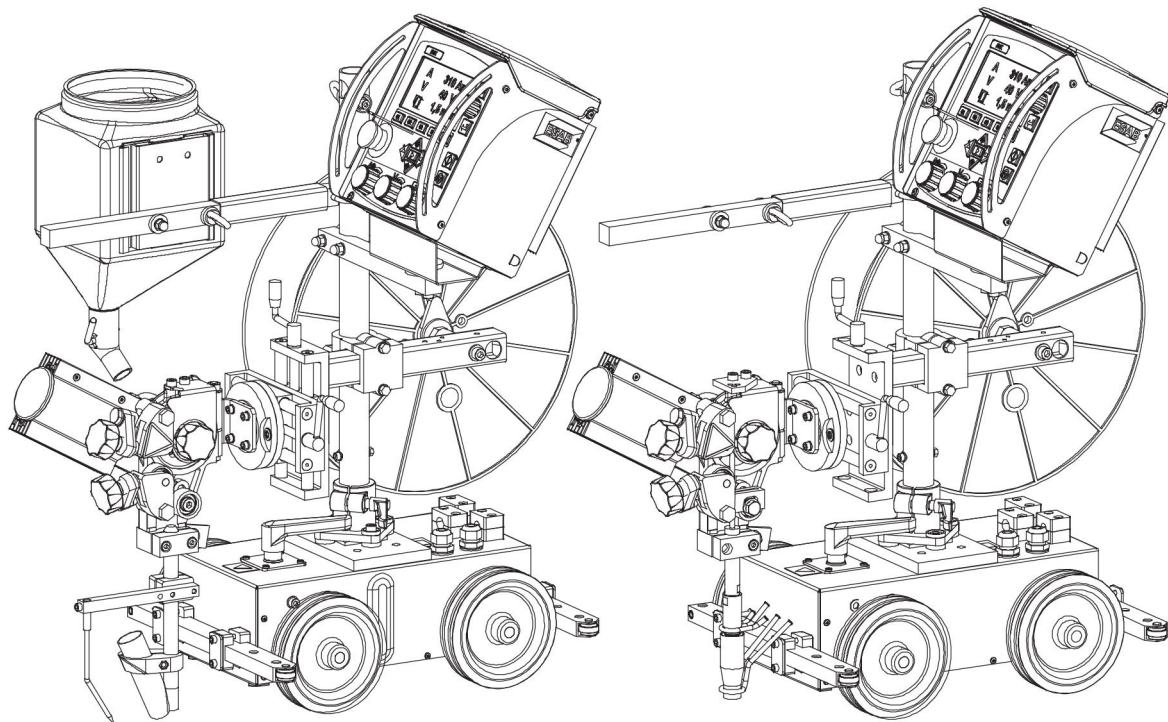


# ***A2 Multitrac***

***A2TF J1 / A2TF J1 Twin***

***A2TG J1 / A2TG J1 4WD***



## **Spare parts list**

<b>Ordering number</b>	<b>Denomination</b>	<b>Type</b>	<b>Notes</b>
0461 233 880	A2 Multitrac SAW	A2TF J1 SAW	
0461 233 881	A2 Multitrac SAW Twin	A2TF J1 Twin SAW	
0461 234 880	A2 Multitrac MIG/MAG	A2TG J1 MIG/MAG	
0461 234 881	A2 Multitrac MIG/MAG	A2TG J1 4WD MIG/MAG	

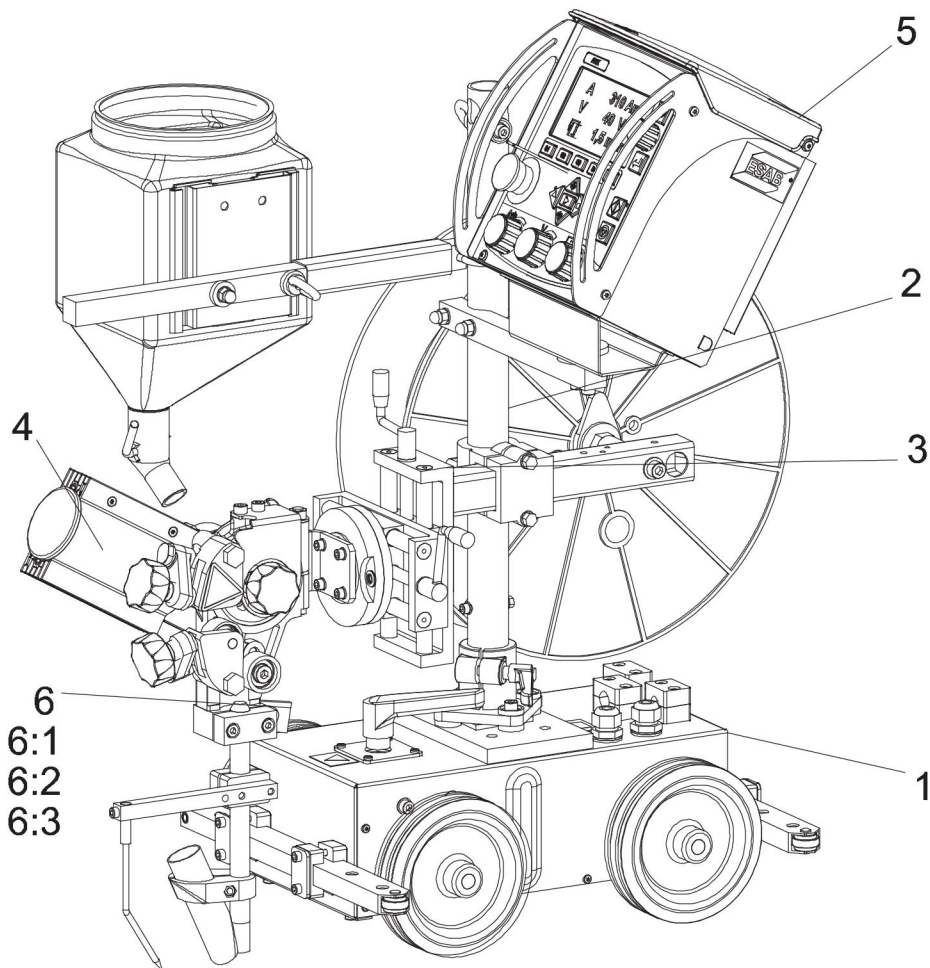
---

<b>SPARE PARTS</b> .....	<b>4</b>
<b>Automatic welding equipment – A2TF J1 SAW</b> .....	<b>4</b>
<b>Automatic welding equipment – A2TF J1 Twin SAW</b> .....	<b>5</b>
<b>Automatic welding equipment – A2TG J1 MIG/MAG</b> .....	<b>6</b>
<b>Automatic welding equipment – A2TG J1 4WD MIG/MAG</b> .....	<b>7</b>
<b>Carriage</b> .....	<b>8</b>
<b>Carrier</b> .....	<b>10</b>
<b>Slide travel kit</b> .....	<b>12</b>
<b>Slide</b> .....	<b>13</b>
<b>Rotary slide</b> .....	<b>14</b>
<b>Wire feed unit complete (Right) – SAW</b> .....	<b>15</b>
<b>Wire feed unit complete (Right) – UP Twin</b> .....	<b>16</b>
<b>Wire feed unit complete (Right) – MIG/MAG</b> .....	<b>17</b>
<b>Wire feed unit complete (Right) – 4WD MIG/MAG</b> .....	<b>18</b>
<b>Straightener (right mounted)</b> .....	<b>19</b>
<b>Straightener (right mounted)</b> .....	<b>20</b>
<b>Bearing housing with stub shaft</b> .....	<b>21</b>
<b>Flux hopper complete</b> .....	<b>22</b>
<b>Flux valve</b> .....	<b>23</b>
<b>Connector</b> .....	<b>24</b>
<b>Contact equipment</b> .....	<b>25</b>
<b>Flux nozzle</b> .....	<b>26</b>
<b>Fine wire straightener for twin wire</b> .....	<b>27</b>
<b>Connector</b> .....	<b>28</b>
<b>Feed unit</b> .....	<b>29</b>
<b>Contact device – MTW 600, 250 mm</b> .....	<b>30</b>
<b>Solenoid valve with cable</b> .....	<b>31</b>

SPARE PARTS

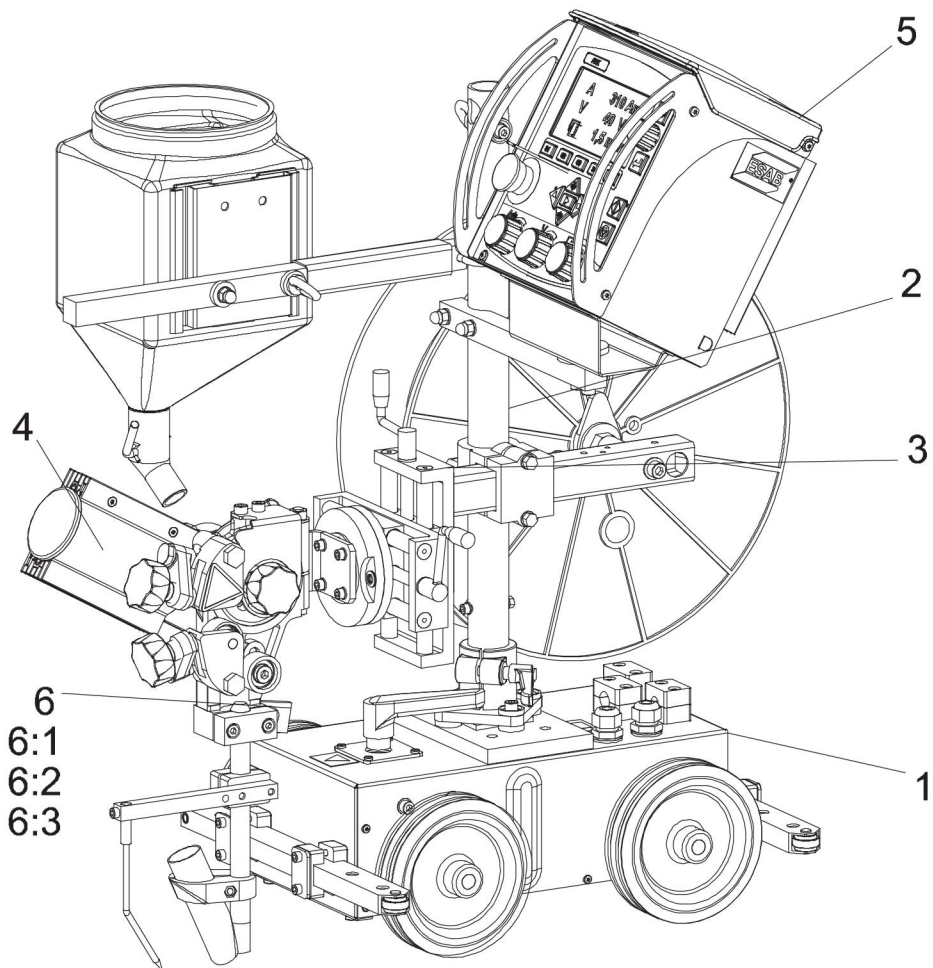
**Automatic welding equipment – A2TF J1 SAW**

Item	Qty	Ordering no.	Denomination	Notes
		<b>0461 233 880</b>	<b>Automatic welding equipment</b>	<b>A2TF J1 SAW</b>
1	1	0449 100 883	Carriage	
2	1	0449 154 880	Carrier	
3	1	0449 152 880	Slide travel kit, manual	90 mm
4	1	0449 150 900	Wire feed unit complete	
5	1	0460 504 880	Control box	PEK
6	1	0449 153 900	Cable kit	L=1.6 m
6:1	1	0460 909 881	Pulse transducer cable	
6:2	1	0461 249 881	Motor cable	
6:3	1	0461 239 880	Arc welding cable	



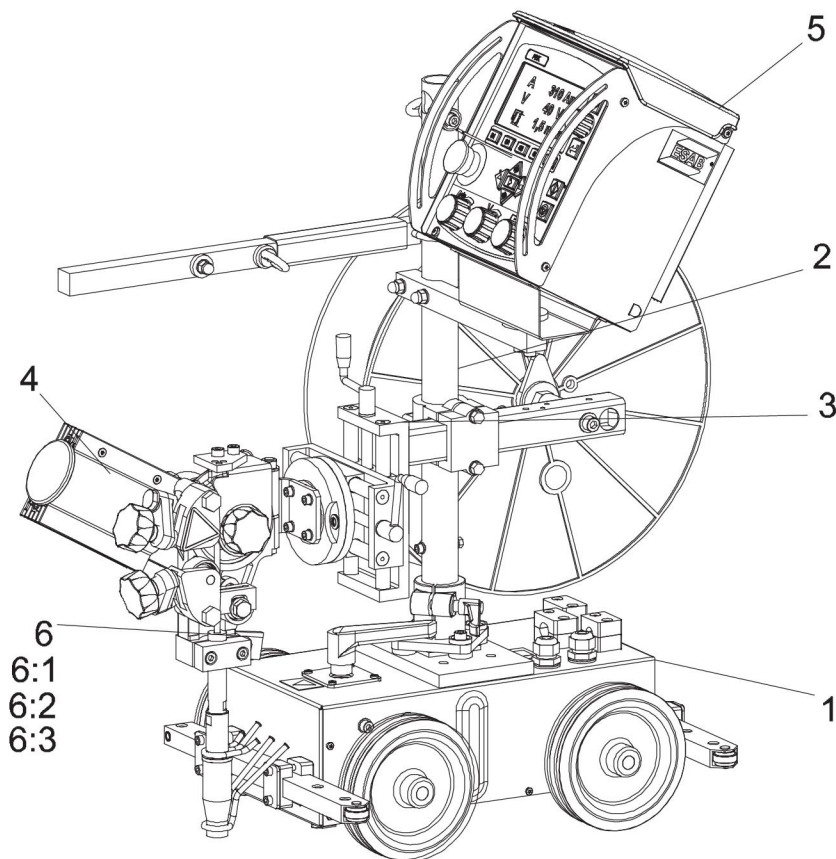
## Automatic welding equipment – A2TF J1 Twin SAW

Item	Qty	Ordering no.	Denomination	Notes
		<b>0461 233 881</b>	<b>Automatic welding equipment</b>	<b>A2TF J1 Twin SAW</b>
1	1	0449 100 883	Carriage	
2	1	0449 154 880	Carrier	
3	1	0449 152 880	Slide travel kit, manual	90 mm
4	1	0449 150 901	Wire feed unit complete	Twin
5	1	0460 504 880	Control box	PEK
6	1	0449 153 900	Cable kit	L=1.6 m
6:1	1	0460 909 881	Pulse transducer cable	
6:2	1	0461 249 881	Motor cable	
6:3	1	0461 239 880	Arc welding cable	



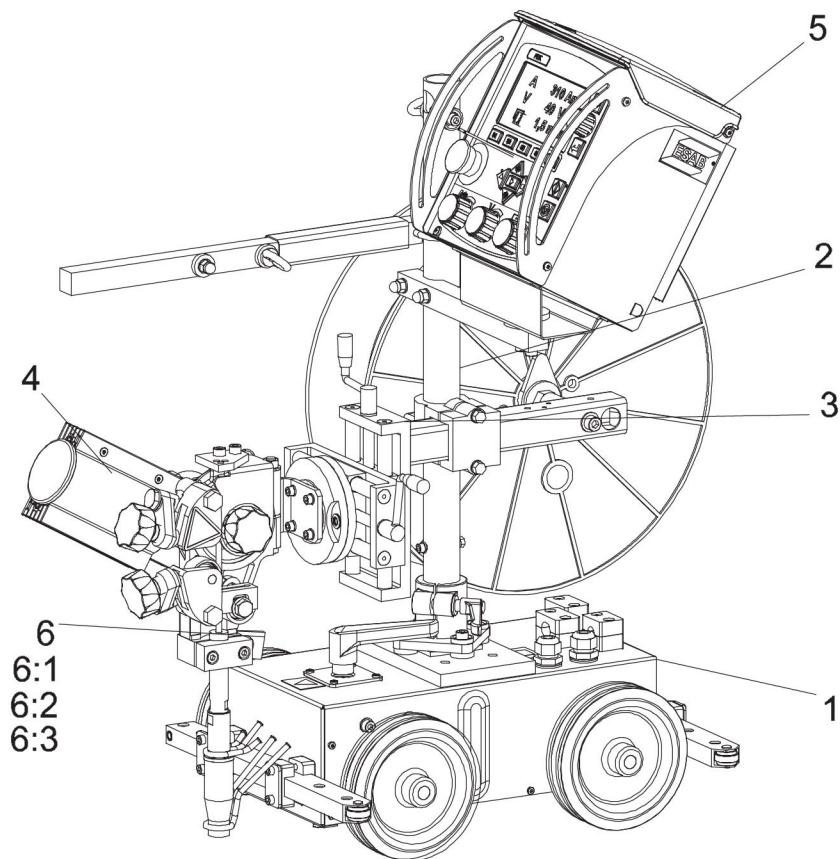
## Automatic welding equipment – A2TG J1 MIG/MAG

Item	Qty	Ordering no.	Denomination	Notes
		<b>0461 233 880</b>	<b>Automatic welding equipment</b>	<b>A2TG J1 MIG/MAG</b>
1	1	0449 100 883	Carriage	
2	1	0449 154 880	Carrier	
3	1	0449 152 880	Slide travel kit, manual	90 mm
4	1	0449 150 902	Wire feed unit complete	
5	1	0460 504 880	Control box	PEK
6	1	0449 153 900	Cable kit	L=1.6 m
6:1	1	0460 909 881	Pulse transducer cable	
6:2	1	0461 249 881	Motor cable	
6:3	1	0461 239 880	Arc welding cable	



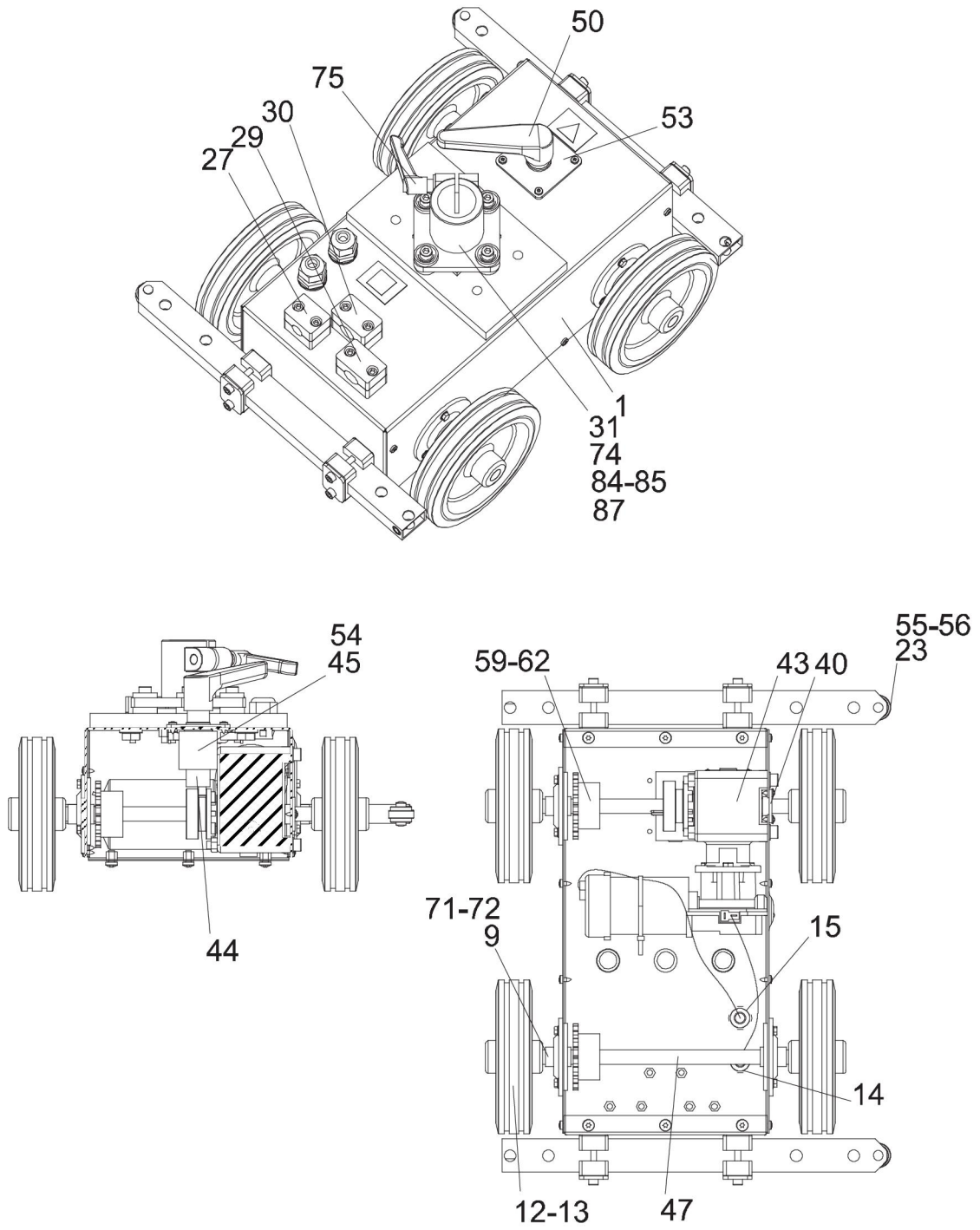
## Automatic welding equipment – A2TG J1 4WD MIG/MAG

Item	Qty	Ordering no.	Denomination	Notes
		<b>0461 234 881</b>	<b>Automatic welding equipment</b>	<b>A2TG J1 4WD MIG/MAG</b>
1	1	0449 100 883	Carriage	
2	1	0449 154 880	Carrier	
3	1	0449 152 880	Slide travel kit, manual	90 mm
4	1	0449 150 903	Wire feed unit complete	4WD
5	1	0460 504 880	Control box	PEK
6	1	0449 153 900	Cable kit	L=1.6 m
6:1	1	0460 909 881	Pulse transducer cable	
6:2	1	0461 249 881	Motor cable	
6:3	1	0461 239 880	Arc welding cable	



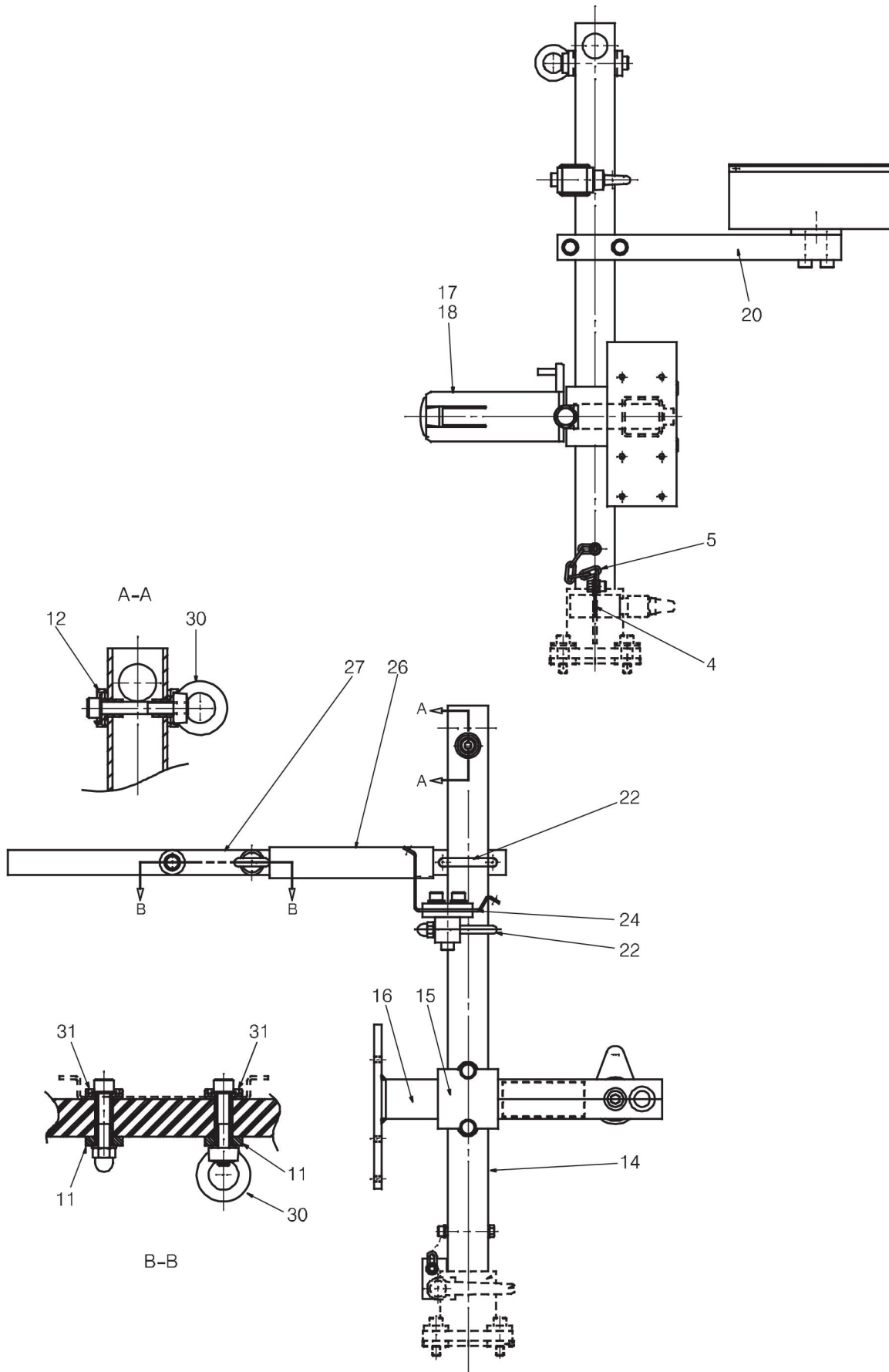
## Carriage

Item	Qty	Ordering no.	Denomination	Notes
		<b>0449 100 883</b>	<b>Carriage</b>	
1	1	0449 087 001	Cover	
9	3	0333 087 005	Y-flange unit	
12	4	0415 857 001	Rubber wheel	
13	4	0211 102 962	Roll pin	
14	1	0461 241 880	Motor cable	L=1.9 m
15	1	0461 242 880	Pulse transducer cable	L=2.1 m
23	2	0449 205 880	Guide arm complete	
27	1	0413 366 320	Clamp	
29	1	0413 366 105	Clamp	
30	1	0413 366 112	Clamp	
31	1	0449 101 001	Plate	
40	1	0800 185 001	Bearing bushing	
43	1	0449 089 881	Drive unit	
44	1	0449 098 001	Shaft with eccentric	
45	1	0449 099 001	Shaft support	
47	1	0449 096 001	Shaft	
50	1	0333 630 001	Adjustable locking lever	
53	1	0449 097 001	Plate	
54	1	0449 103 001	Pressure screw	
55	8	0449 206 001	Clamp	
56	4	0191 498 003	Cover plate	
59	2	0333 086 003	Sprocket for carriage	
60	2	0211 102 952	Roll pin	
61	1	0218 201 501	Chain	3/8"×5.7
62	1	0218 201 601	Chain lock	3/8"×5.7
71	3	0449 108 001	Plate	
72	9	0219 504 302	Spring washer	
74	1	0413 539 002	Clamp	
75	1	0193 570 131	Locking lever	
84	4	0163 139 002	Bushing	
85	4	0162 414 002	Insulating pipe	
87	1	0413 527 001	Plate	



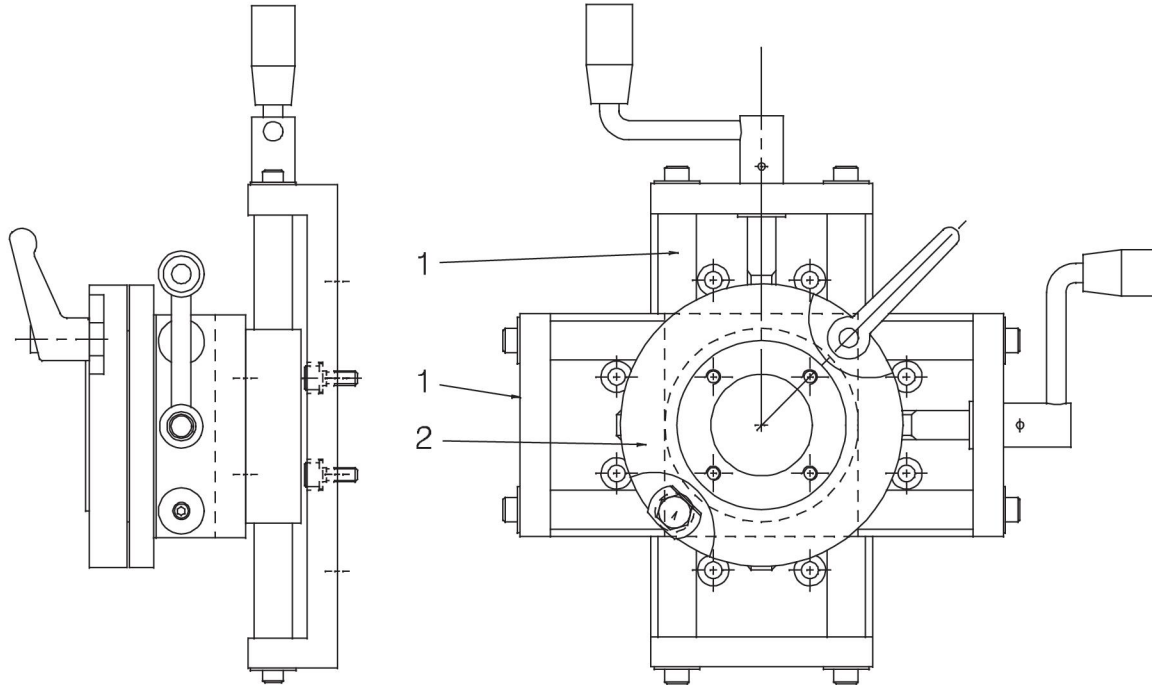
**Carrier**

<b>Item</b>	<b>Qty</b>	<b>Ordering no.</b>	<b>Denomination</b>	<b>Notes</b>
		<b>0449 154 880</b>	<b>Carrier</b>	
4	1	0413 671 001	Chain attachment	
5	1	0413 597 001	Safety chain	
11	6	0163 139 002	Bushing	
12	6	0162 414 002	Insulating tube	
14	1	0413 528 001	Column	
15	1	0413 540 001	Clamp	
16	1	0413 530 880	Arm	
17	1	0146 967 880	Brake hub	
18	1	0413 532 001	Attachment	
20	1	0413 317 002	Handle	
22	2	0156 442 002	Clamp screw	R21 M8
24	1	0334 185 886	Box girder beam complete	
26	1	0413 525 001	Insulating tube	
27	1	0413 317 001	Handle	
30	2	0218 301 113	Lifting eye bolt	
31	2	0162 414 004	Insulating tube	



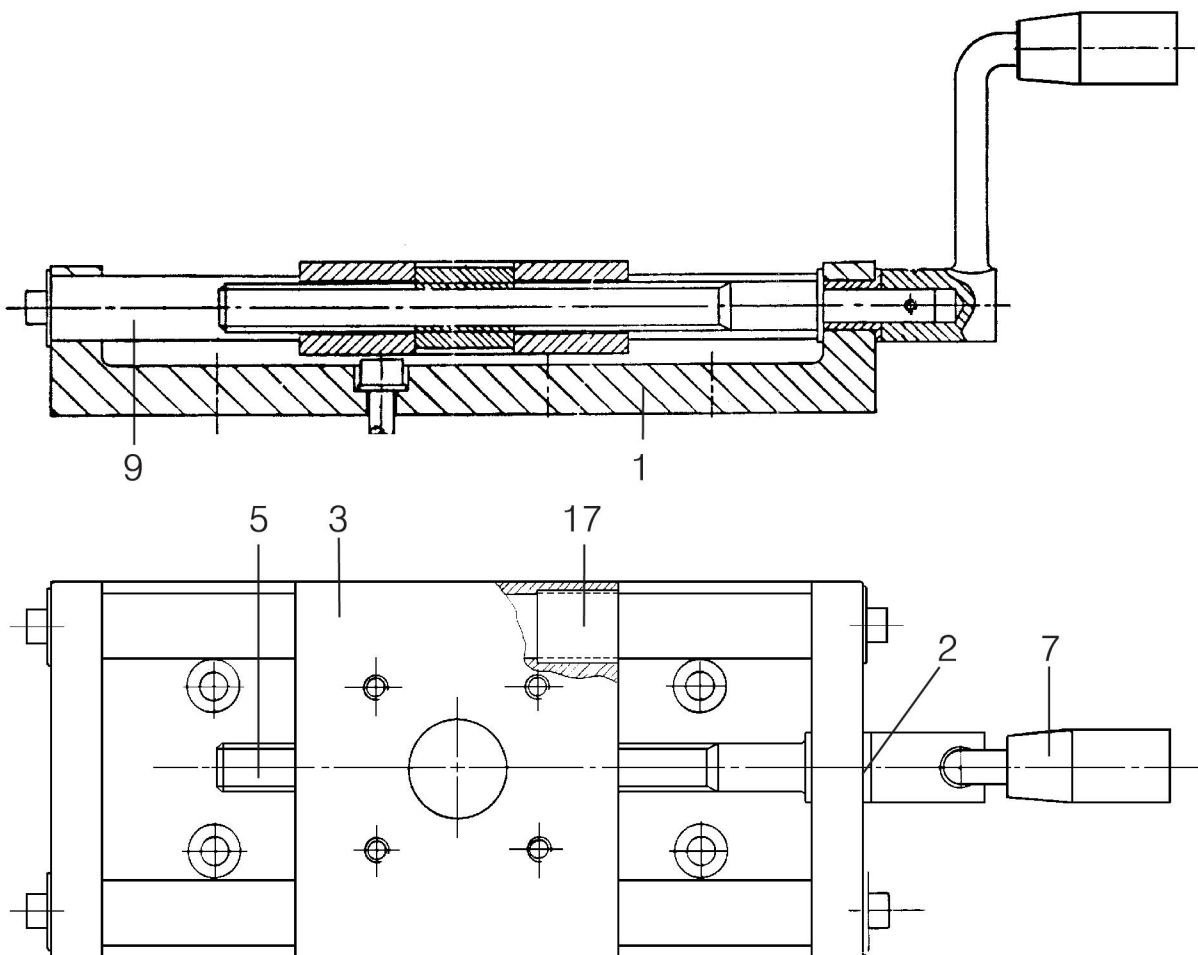
## Slide travel kit

Item	Qty	Ordering no.	Denomination	Notes
		<b>0449 152 880</b>	<b>Slide travel kit</b>	<b>Manual</b>
1	2	0413 518 880	Slide	90 mm
2	1	0413 506 880	Circular slide	



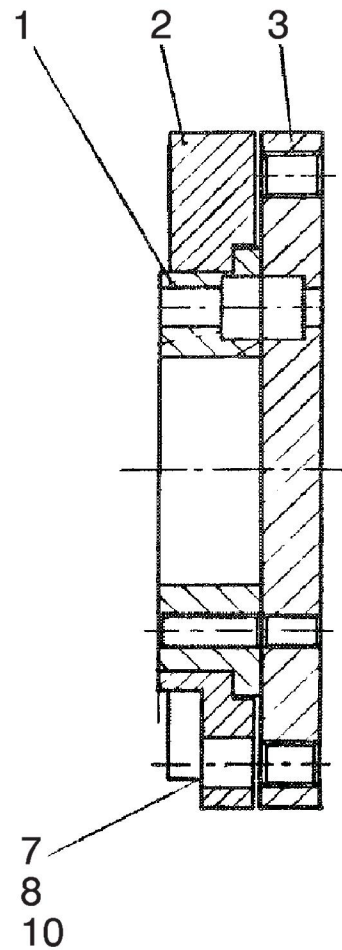
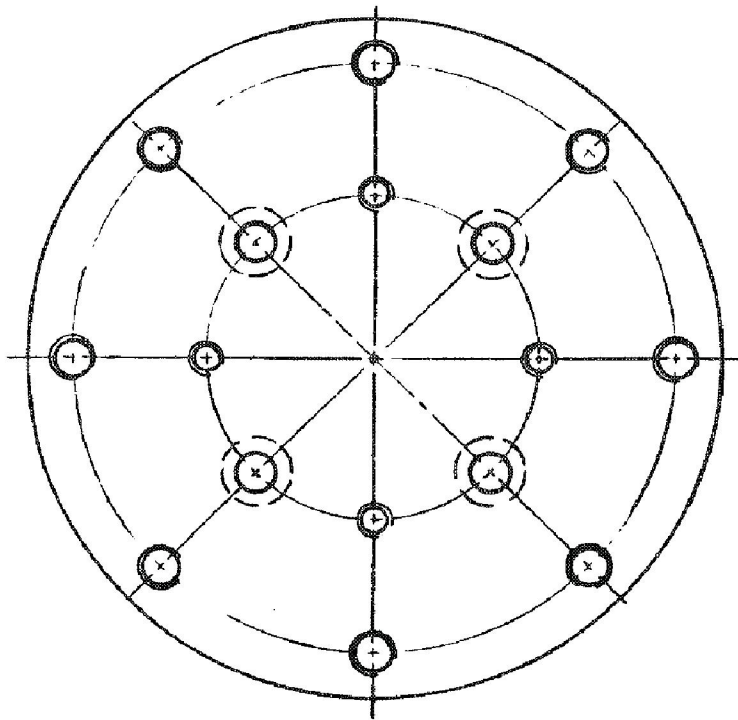
## Slide

Item	Qty	Ordering no.	Denomination	Notes
		<b>0413 518 880</b>	<b>Slide</b>	
1	1	0413 519 001	Slide profile	
2	1	0413 524 001	Bearing bushing	
3	1	0413 521 001	Runner	
5	1	0413 522 001	Lead screw	
7	1	0334 537 002	Crank	
9	2	0413 523 001	Axis	
17	4	0190 240 107	Bearing	



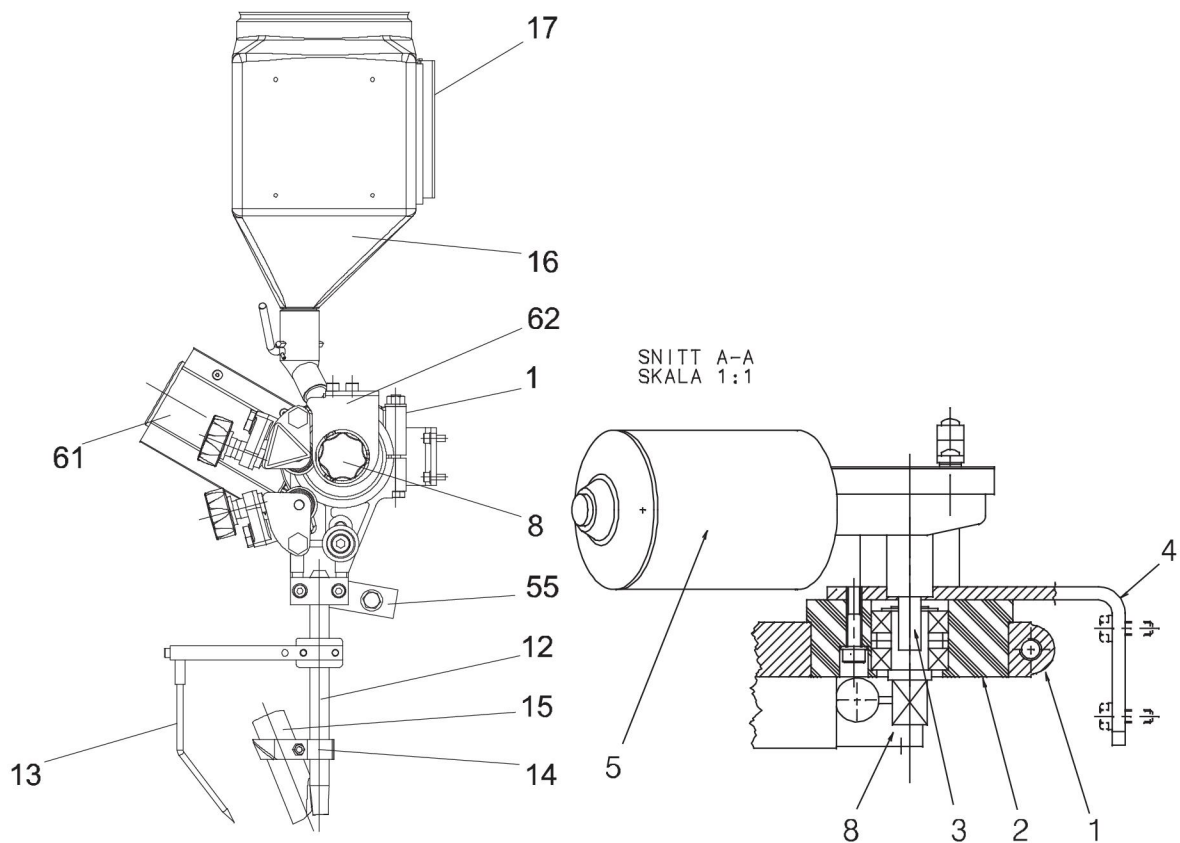
## Rotary slide

Item	Qty	Ordering no.	Denomination	Notes
		<b>0413 506 880</b>	<b>Rotary slide</b>	
1	1	0413 507 001	Flange	
2	1	0413 508 001	Tensioning ring	
3	1	0413 509 001	Flange	
7	2	0219 504 405	Belleville spring	T=0.6
8	1	0193 571 105	Locking piece	
10	1	0193 570 123	Locking lever	



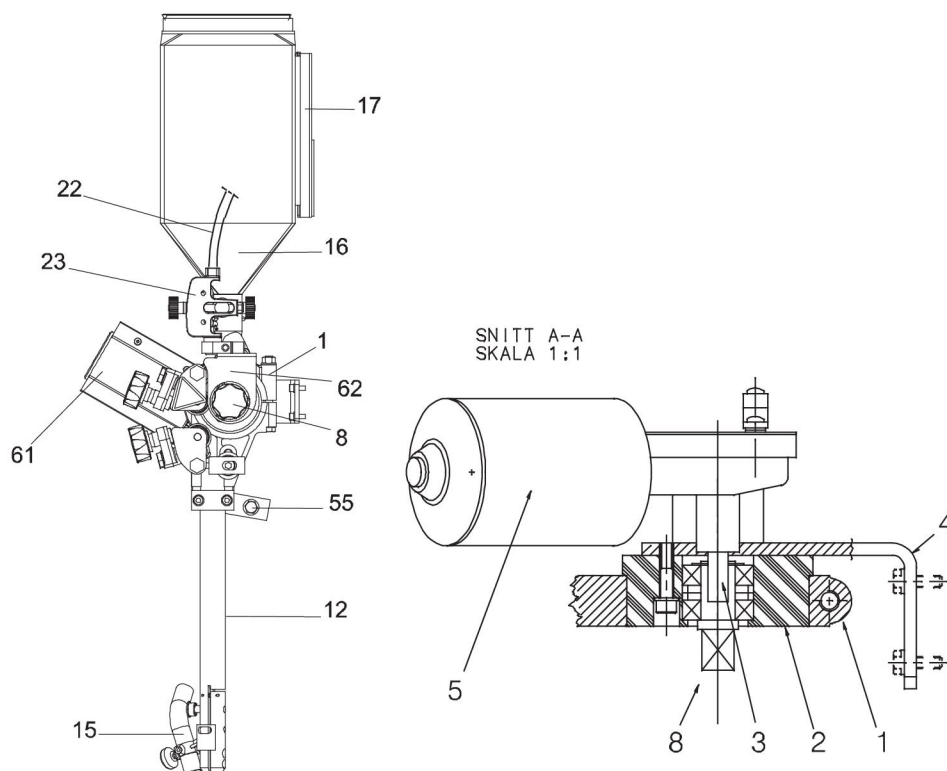
### Wire feed unit complete (Right) – SAW

Item	Qty	Ordering no.	Denomination	Notes
		<b>0449 150 900</b>	<b>Wire feed unit complete (Right)</b>	<b>SAW</b>
1	1	0147 639 882	Wire feed unit	
2	1	0413 072 881	Bearing housing	
3	1	0215 701 210	Wedge, flat	
4	1	0413 517 001	Bracket for motor	
5	1	0812 312 001	Motor with pulse transducer	
8	1	0218 810 183	Insulated hand wheel	
12	1	0413 510 001	Contact tube	D20, L=260 mm
13	1	0416 984 880	Guide pin complete	
14	1	0333 094 880	Clamp for flux tube	
15	1	0332 948 001	Flux tube	
16	1	0332 994 883	Flux container	
17	1	0413 318 001	Holder	
55	1	0449 475 001	Bar	
61	1	0462 132 880	Protecting cover	
62	1	0449 528 001	Protection plate	



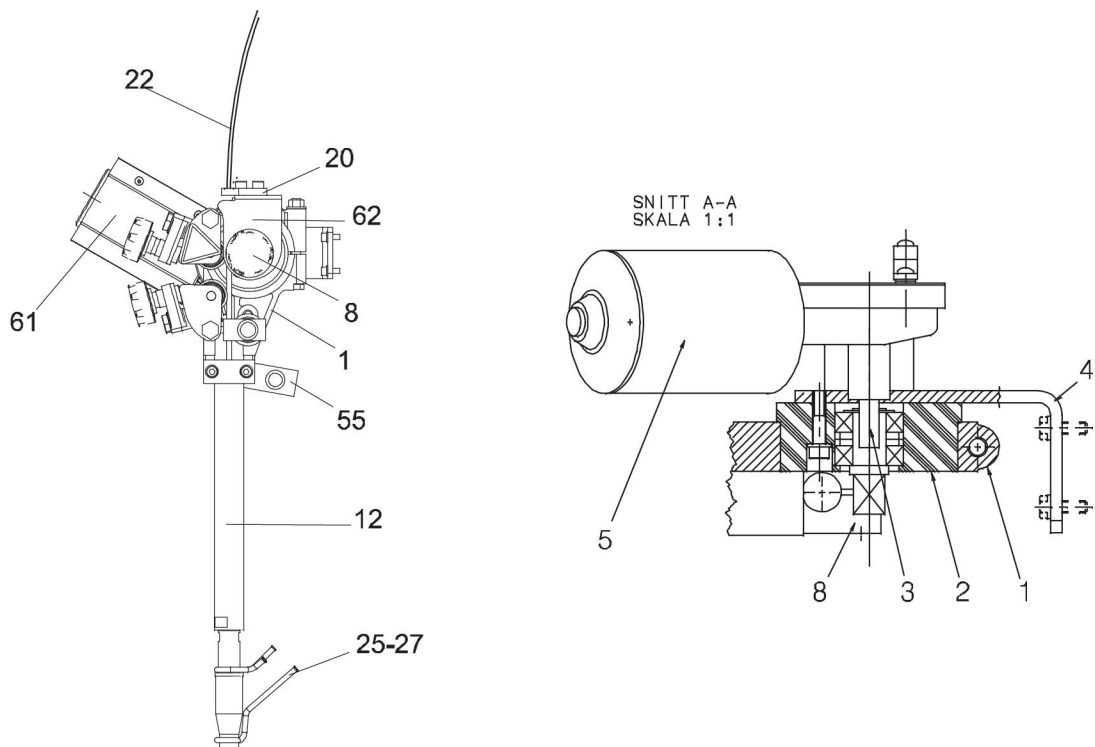
**Wire feed unit complete (Right) – UP Twin**

Item	Qty	Ordering no.	Denomination	Notes
		<b>0449 150 901</b>	<b>Wire feed unit complete (Right)</b>	<b>UP Twin</b>
1	1	0147 639 886	Wire feed unit	Twin
2	1	0413 072 881	Bearing housing	
3	1	0215 701 210	Wedge, flat	
4	1	0413 517 001	Bracket for motor	
5	1	0812 312 001	Motor with pulse transducer	
8	1	0218 810 183	Insulated hand wheel	
12	1	0333 852 881	Contact device	Twin, L=275
15	1	0153 299 880	Flux nozzle	
16	1	0332 994 883	Flux container	
17	1	0413 318 001	Holder	
22		0156 800 002	Wire liner	
23	1	0145 787 880	Fine wire straightener	
50	1	0146 967 880	Brake hub	
51	1	0413 532 002	Attachment	
52	2	0154 734 001	Clamp	
55	1	0457 713 001	Bar	
61	1	0462 132 880	Protecting cover	
62	1	0449 528 001	Protection plate	



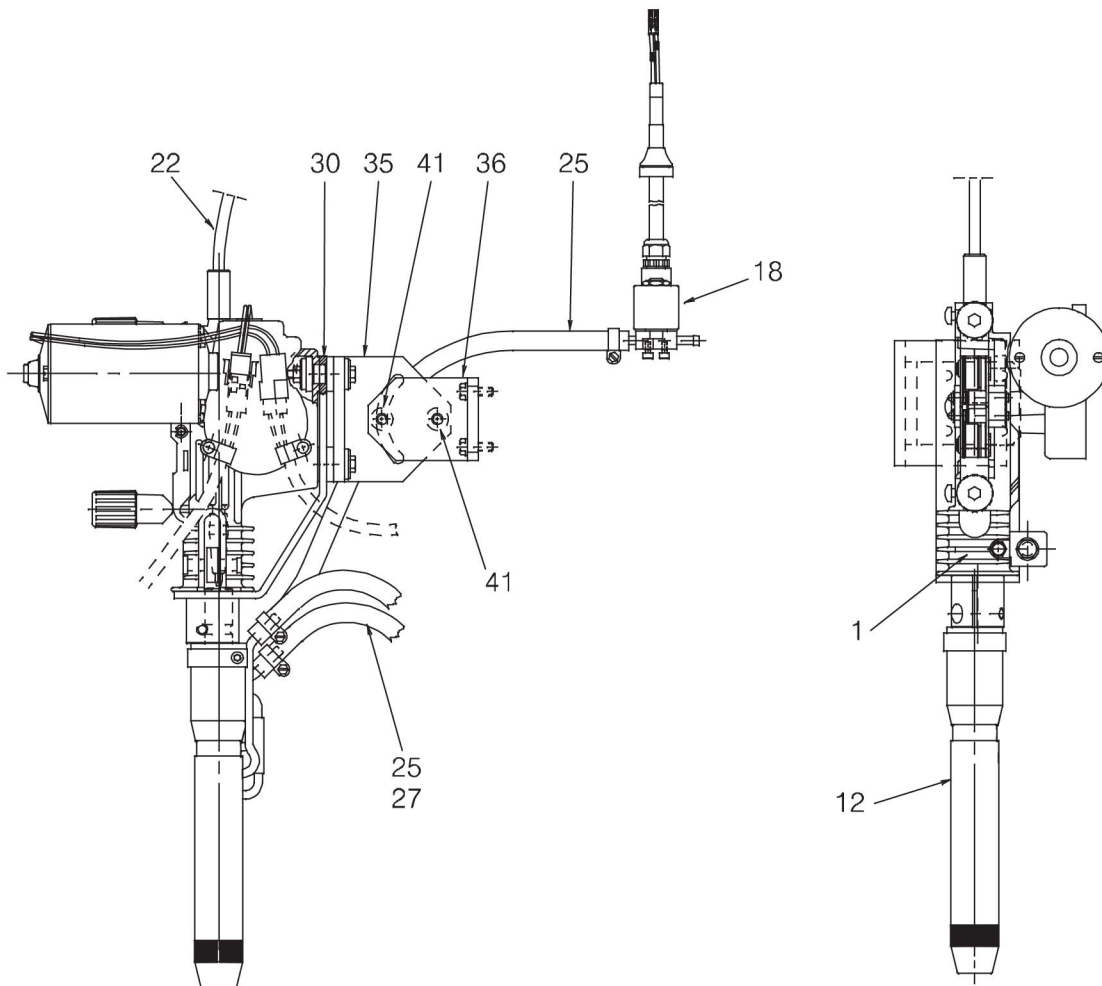
**Wire feed unit complete (Right) – MIG/MAG**

Item	Qty	Ordering no.	Denomination	Notes
		<b>0449 150 902</b>	<b>Wire feed unit complete (Right)</b>	<b>MIG/MAG</b>
1	1	0147 639 882	Wire feed unit	
2	1	0413 072 881	Bearing housing	
3	1	0215 701 210	Wedge, flat	
4	1	0413 517 001	Bracket for motor	
5	1	0812 312 002	Motor with pulse transducer	
8	1	0218 810 183	Insulated hand wheel	
11	2	0417 699 001	Rubber clamp	
12	1	0030 465 389	Contact device	
18	1	0461 238 881	Solenoid valve and cable	
20	1	0155 300 001	Plate	
22	1	0156 800 002	Wire liner	
25	1	0333 754 001	Hose	L=2.25 m, D14/6.3
26	6	0193 761 002	Hose clamp	
27	2	0147 336 880	Hose coupling	
55	1	0449 475 001	Bar	
61	1	0462 132 880	Protection cover	
62	1	0449 528 001	Protection plate	



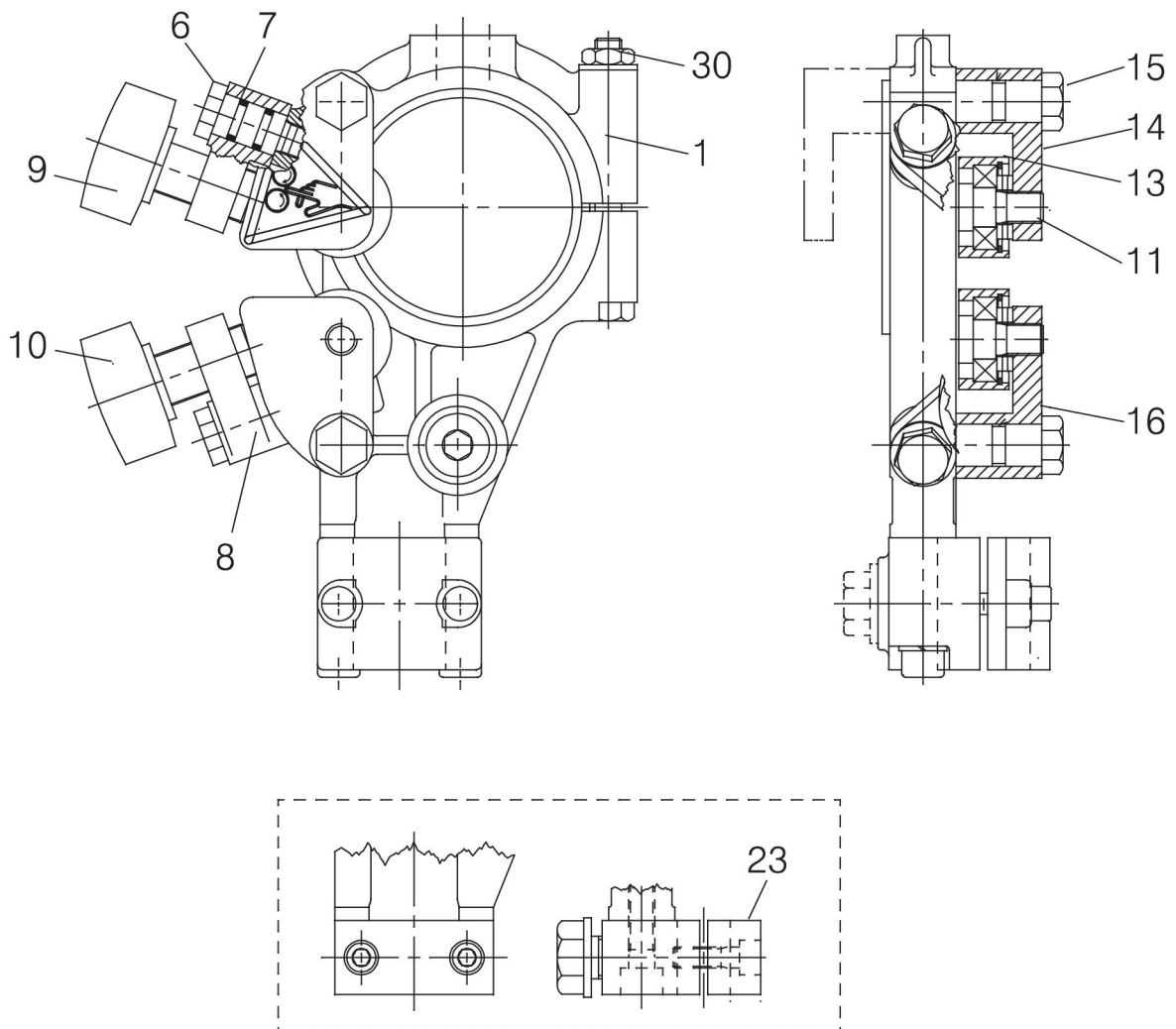
### Wire feed unit complete (Right) – 4WD MIG/MAG

Item	Qty	Ordering no.	Denomination	Notes
		<b>0449 150 903</b>	<b>Wire feed unit complete (Right)</b>	<b>4WD, MIG/MAG</b>
1	1	0456 424 902	Wire feed unit	
12	1	0457 460 881	Contact device	MTW 600, L=250
18	1	0461 238 881	Solenoid valve and cable	
22		0156 800 002	Wire liner	
25		0333 754 001	Hose	D14/6.3
27	2	0147 336 880	Hose coupling	
30	1	0449 011 001	Support	
35	1	0449 009 002	Motor bracket	
36	1	0449 009 001	Motor bracket	
43	2	0163 139 002	Bushing	
44	2	0162 414 002	Insulating tube	



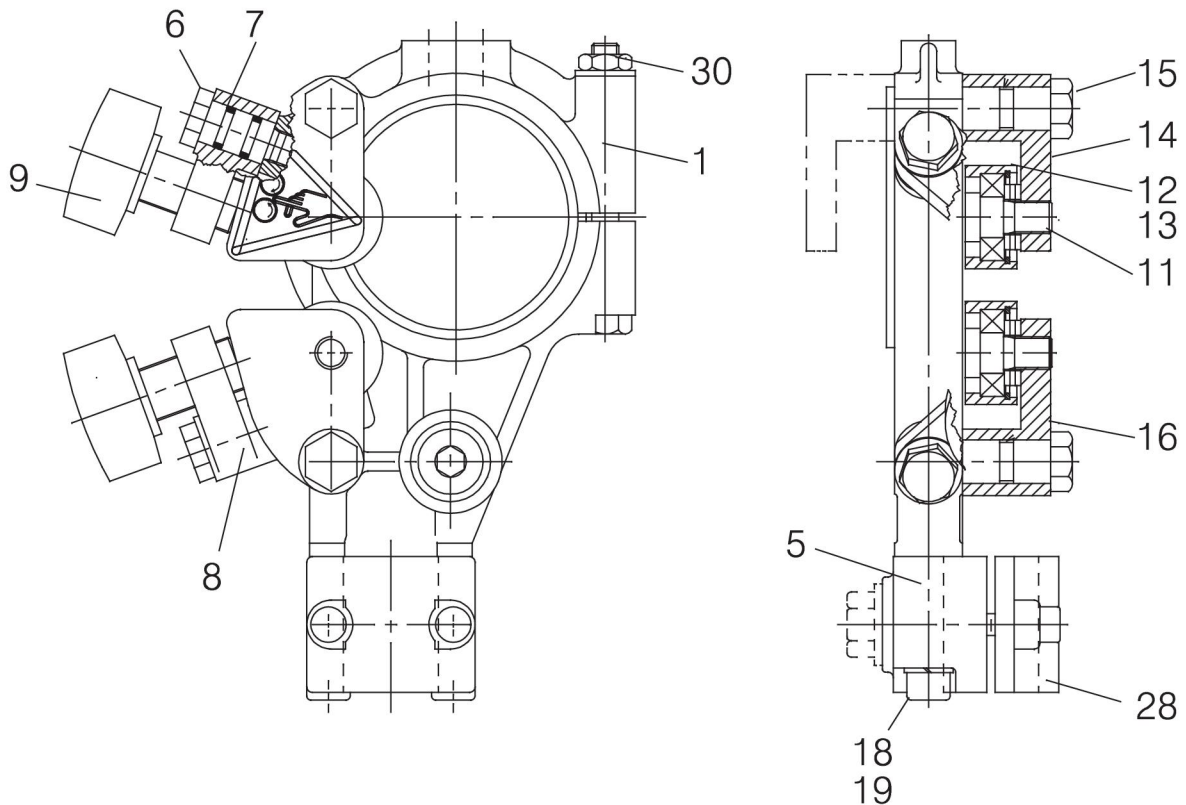
### Straightener (right mounted)

Item	Qty	Ordering no.	Denomination	Notes
		<b>0147 639 882</b>	<b>Straightener (right mounted)</b>	
1	1	0156 449 001	Clamp	
6	2	0212 900 001	Spacer screw	
7	4	0215 201 209	O-ring	D11.3×2.4
8	2	0218 400 801	Pressure roller arm	
9	1	0218 810 181	Handwheel	
10	1	0218 810 182	Handwheel	
11	3	0332 408 001	Stub shaft	
13	3	0153 148 880	Roller	
14	1	0415 498 001	Thrust roller carrier	
15	2	0212 902 601	Spacer screw	
16	1	0415 499 001	Thrust roller carrier	
23	1	0334 571 880	Contact clamp	
30	1	0212 601 110	Nut	M10



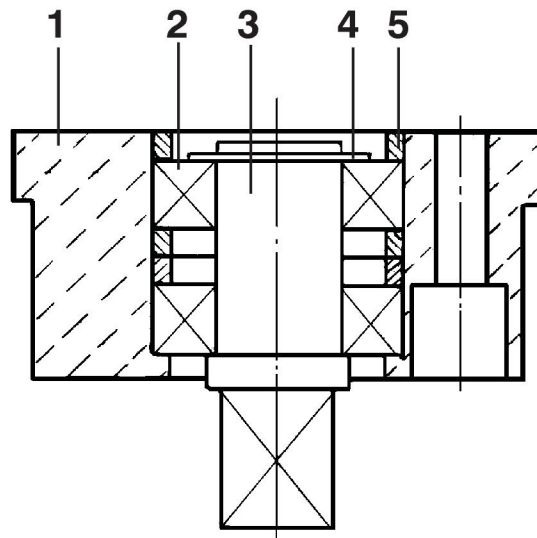
**Straightener (right mounted)**

Item	Qty	Ordering no.	Denomination	Notes
		<b>0147 639 886</b>	<b>Straightener (right mounted)</b>	
1	1	0156 449 001	Clamp	
5	1	0156 530 001	Clamp half	
6	1	0212 900 001	Spacer screw	
7	2	0215 201 209	O-ring	D11.3×2.4
8	1	0218 400 801	Pressure roller arm	
9	1	0218 810 181	Handwheel	
11	1	0332 408 001	Stub shaft	
12	1	0218 524 580	Pressure roller	Twin
13	1	0153 148 880	Roller	
14	1	0415 498 001	Thrust roller carrier	
15	1	0212 902 601	Spacer screw	
19	2	0219 501 013	Spring washer	D18.1/10.2
28	1	0156 531 001	Clamp half	
30	1	0212 601 110	Nut	M10



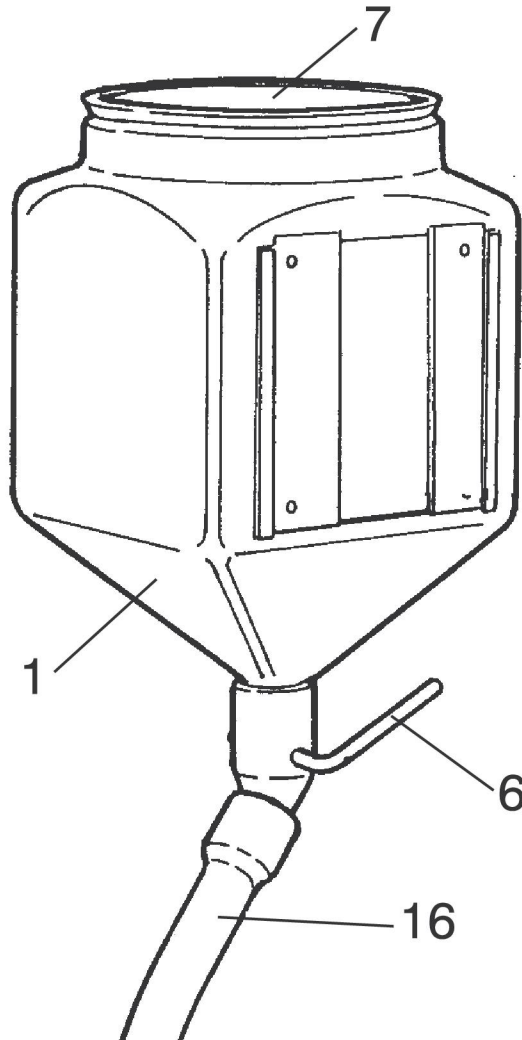
## Bearing housing with stub shaft

Item	Qty	Ordering no.	Denomination	Notes
		<b>0413 072 881</b>	<b>Bearing housing with stub shaft</b>	
1	1	0413 073 002	Bearing housing	
2	2	0190 726 003	Ball bearing	
3	1	0334 575 001	Stub shaft	
4	1	0215 701 014	Retaining ring	D17
5	3	0334 576 001	Spacer	



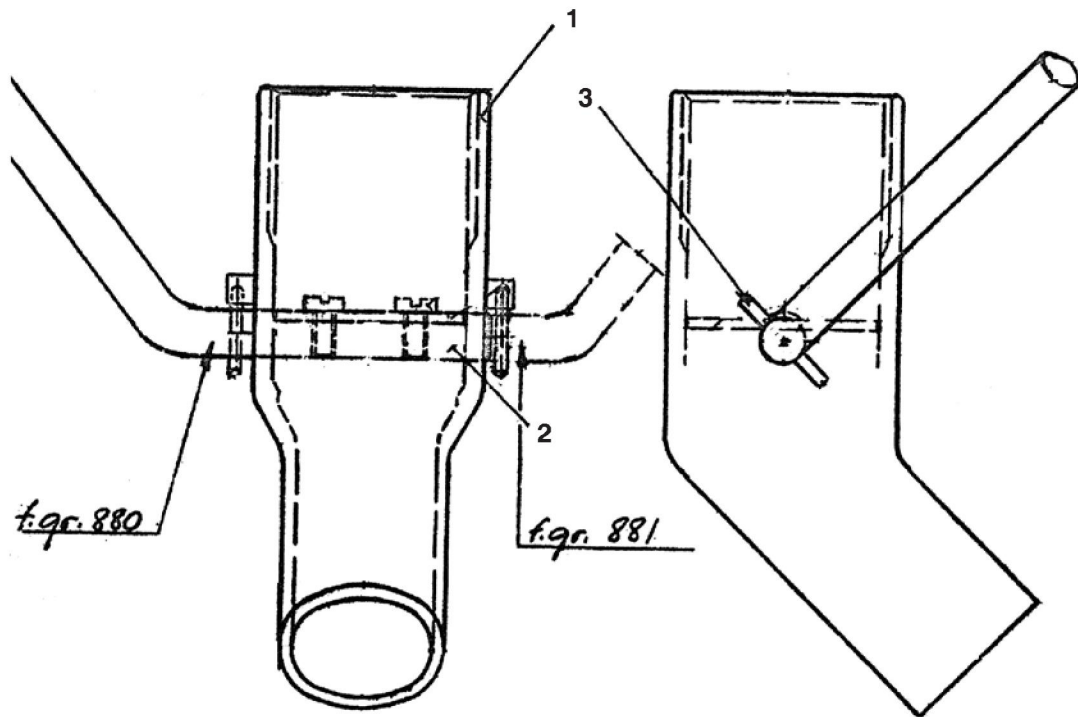
## Flux hopper complete

Item	Qty	Ordering no.	Denomination	Notes
		<b>0332 994 883</b>	<b>Flux hopper complete</b>	
1	1	0332 837 001	Hopper for flux	
6	1	0153 347 881	Flux valve	
7	1	0020 301 780	Flux strainer	
16	1	0443 383 002	Flux hose	L=500



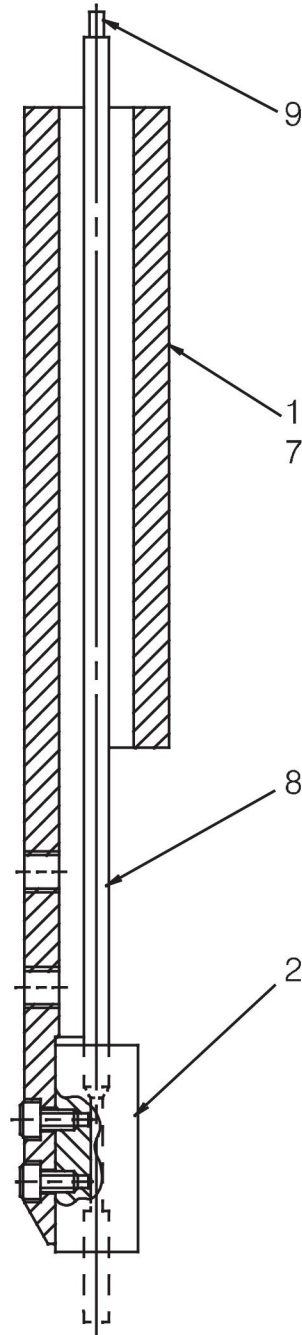
## Flux valve

Item	Qty	Ordering no.	Denomination	Notes
		<b>0153 347 880</b>	<b>Flux valve</b>	
1	1	0153 348 001	Outlet	
2	1	0153 349 001	Shaft	
3	1	0211 102 938	Roll pin	D3×20



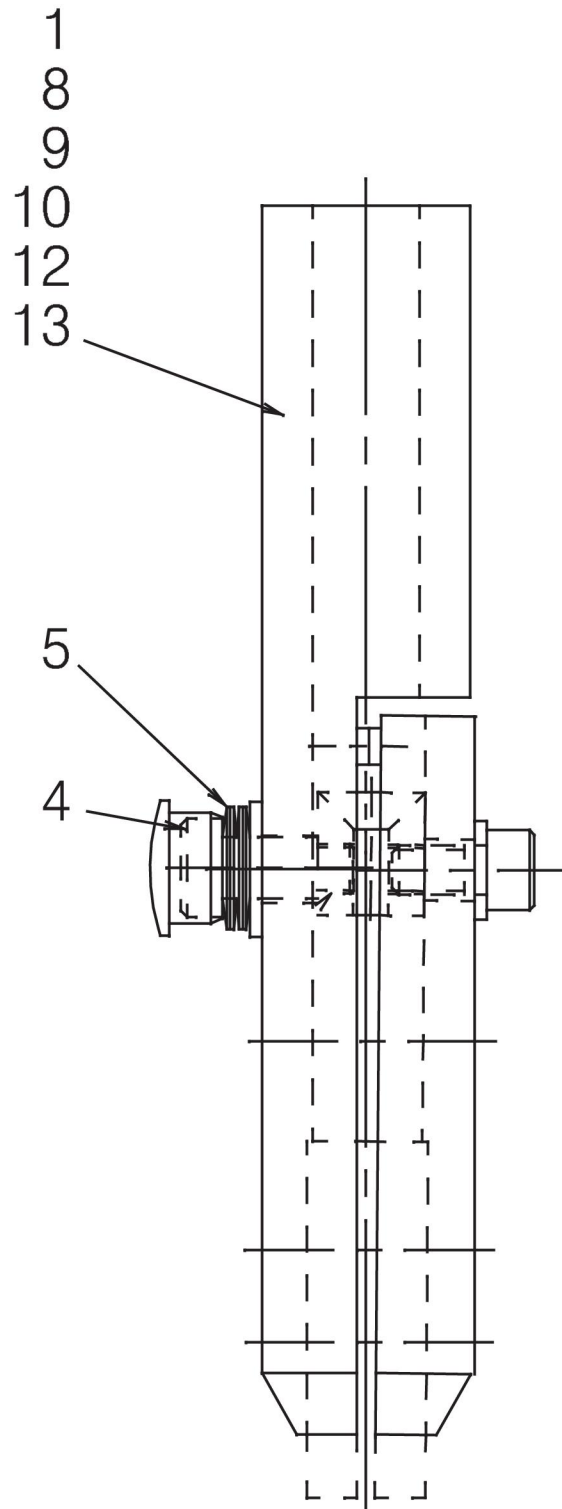
## Connector

Item	Qty	Ordering no.	Denomination	Notes
		<b>0333 852 881</b>	<b>Connector</b>	<b>Twin L=275 A6 UP</b>
2	1	0333 772 001	Nozzle holder	
7	1	0417 959 881	Contact equipment	L=275, Heavy duty
8	2	0415 032 001	Guide pipe	
9	2	0334 279 001	Spiral to connector	L=366



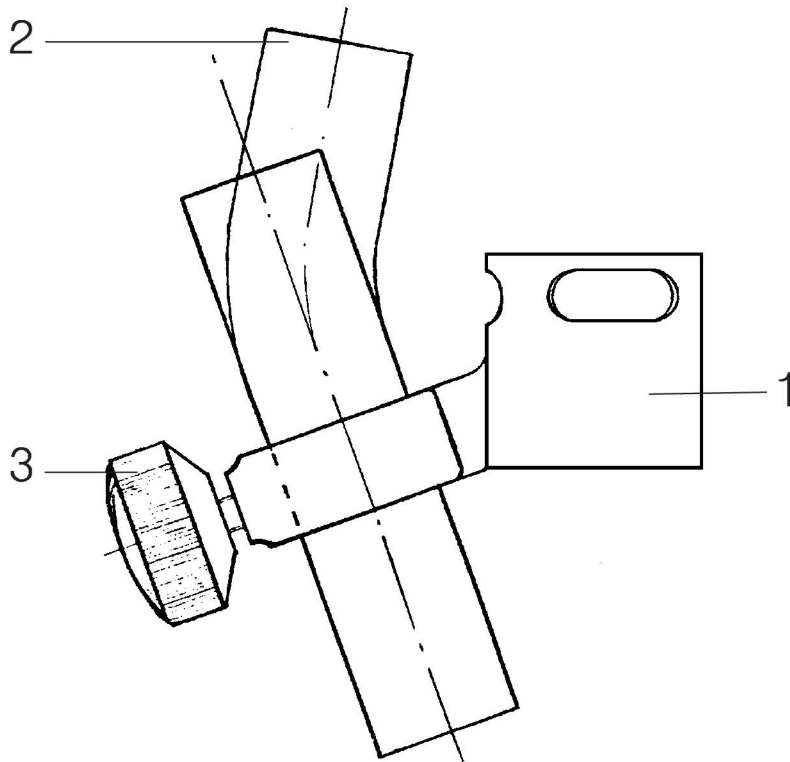
## Contact equipment

Item	Qty	Ordering no.	Denomination	Notes
		<b>0417 959 881</b>	<b>Contact equipment</b>	<b>L=275 mm</b>
4	1	0443 372 001	Screw	
5	4	0219 504 307	Belleville spring	T=1.1
8	1	0443 344 881	Pipe	L=275



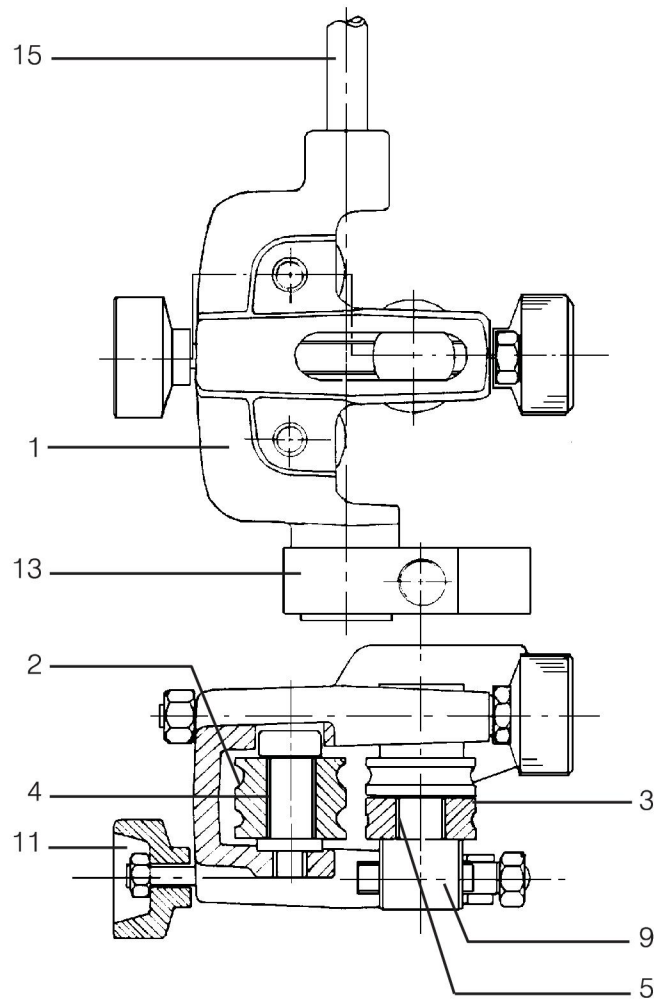
**Flux nozzle**

Item	Qty	Ordering no.	Denomination	Notes
		<b>0153 299 880</b>	<b>Flux nozzle</b>	
1	1	0153 290 002	Pipe holder	
2	1	0153 296 001	Pipe bend	
3	1	0153 425 001	Wheel	



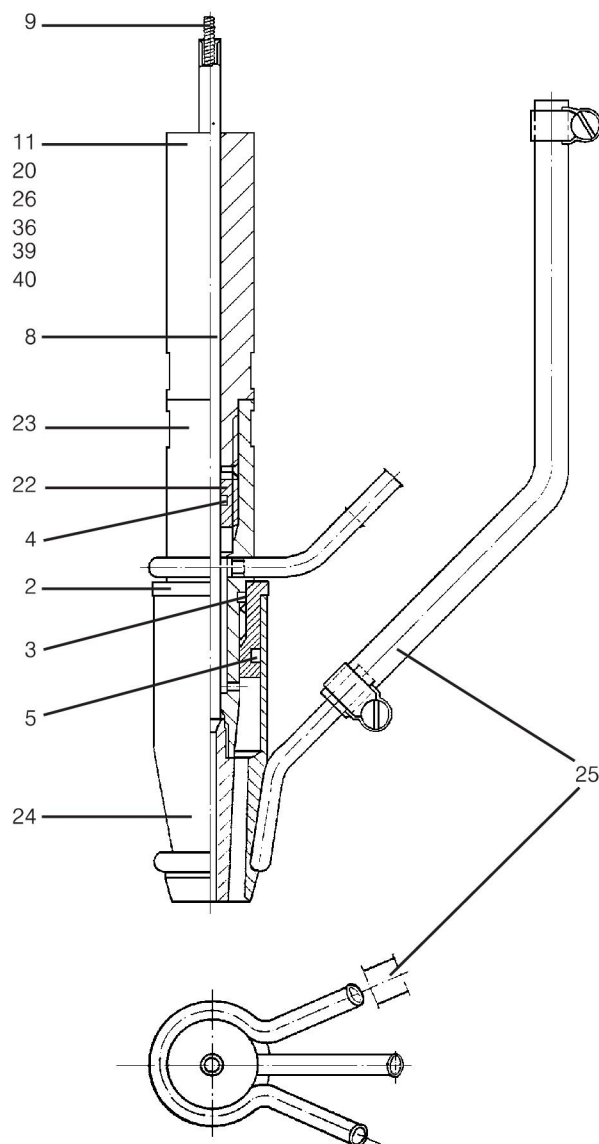
## Fine wire straightener for twin wire

Item	Qty	Ordering no.	Denomination	Notes
		<b>0145 787 880</b>	<b>Fine wire straightener for twin wire</b>	
1	1	0145 788 001	Case	
2	2	0145 789 001	Roller	
3	2	0145 790 001	Roller	
4	2	0145 791 001	Bearing bushing	
5	2	0190 240 103	Bearing bushing	D12/10
6	2	0145 792 001	Screw	
9	2	0145 793 001	Runner	
10	2	0145 796 002	Screw	
11	2	0145 794 001	Knob	
13	1	0145 795 001	Link	
15	1	0151 287 001	Hose	L=600



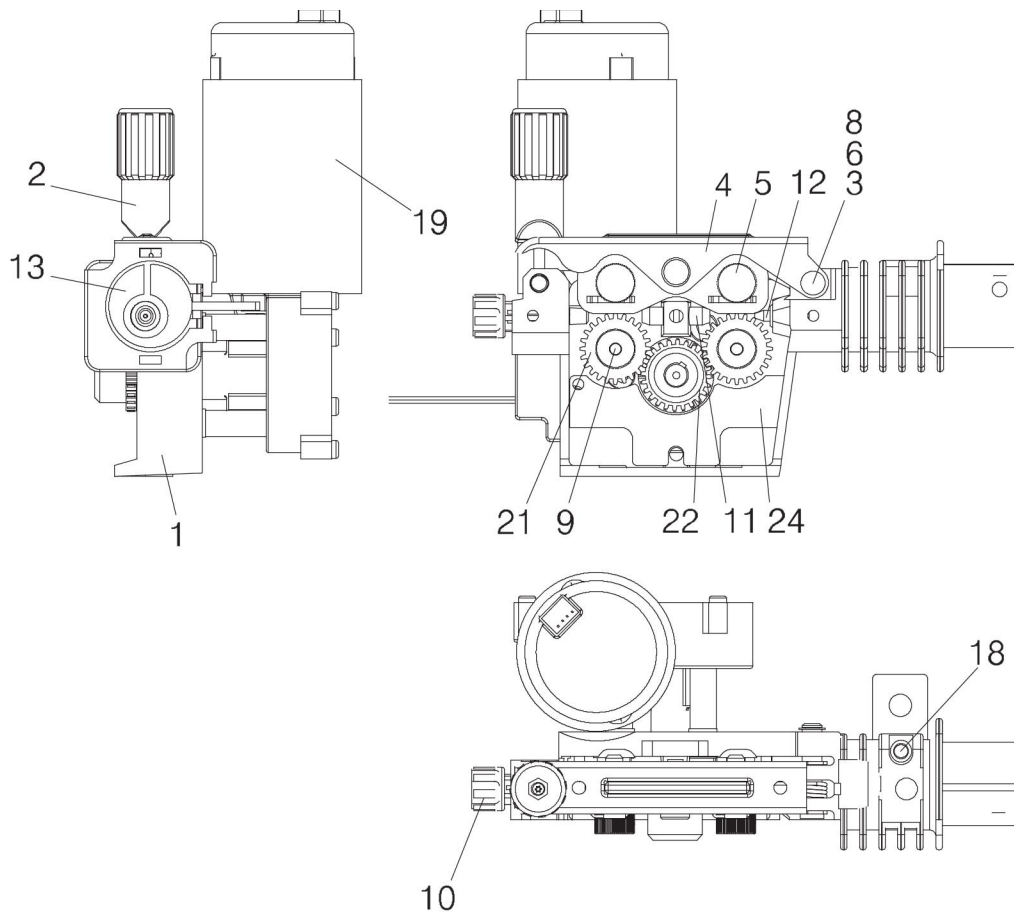
## Connector

Item	Qty	Ordering no.	Denomination	Notes
		<b>0030 465 389</b>	<b>Connector</b>	
2	1	0145 226 001	Insulating sleeve	
3	1	0190 680 313	O-ring	OR 15.3×2.4
4	1	0190 680 303	O-ring	OR 5.3×2.4
5	1	0190 680 405	O-ring	OR 22.2×3
8	1	0334 278 880	Insert tube	
9	1	0334 279 001	Spiral	
22	1	0146 099 001	Plug	
23	1	0145 534 882	Contact tube	
24	1	0145 227 882	Gas nozzle	
25	1	0144 998 882	Water hose	
39	1	0040 979 804	Extension	L=108, D20



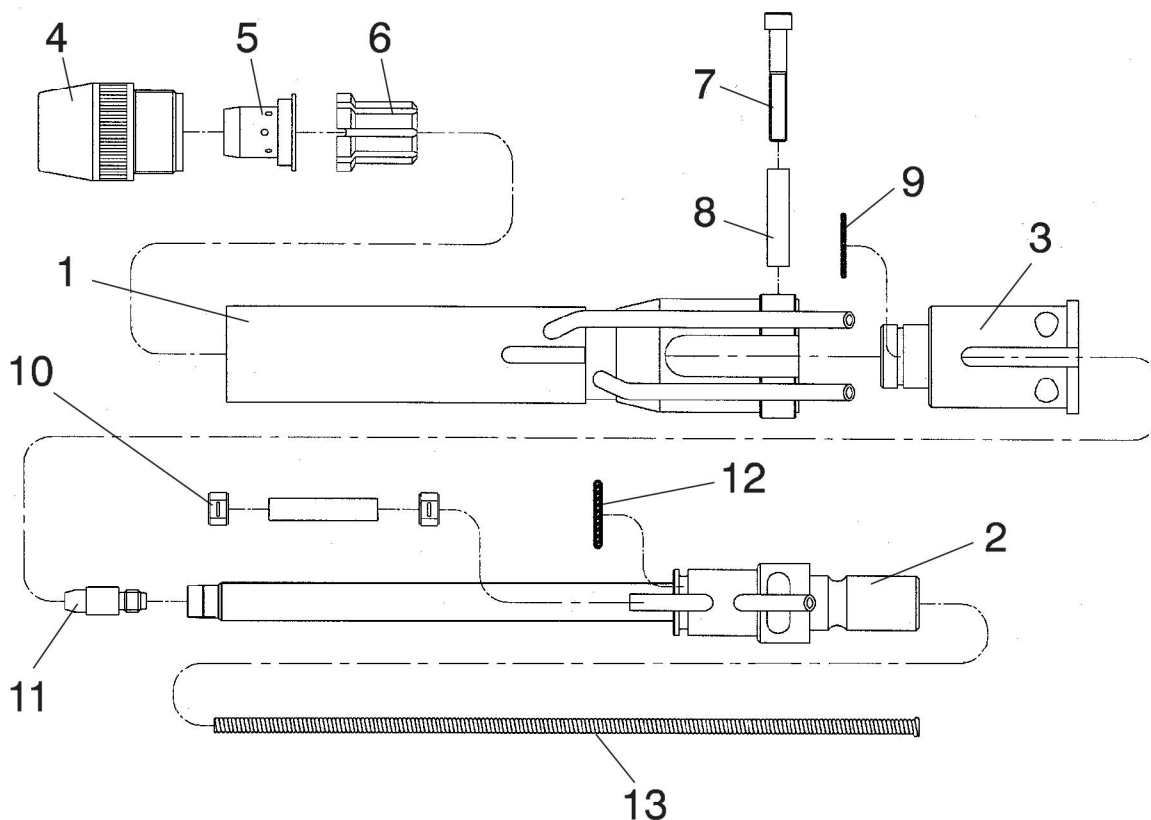
## Feed unit

Item	Qty	Ordering no.	Denomination	Notes
		<b>0456 424 902</b>	<b>Feed unit</b>	
1	1	0455 046 003	Gear housing	
2	2	0368 749 881	Pressure device	
3	1	0458 997 001	Shaft	
4	1	0459 001 880	Pressure arm	
5	2	0458 999 001	Shaft	
6	1	0458 993 001	Spring	
8	4	0215 702 706	Locking washer	
9	2	0458 722 001	Shaft	
10	1	0380 351 001	Wire guide nipple	
11	1	0455 072 001	Intermediate nozzle	D13 (W)
12	1	0469 837 880	Outlet nozzle	(W)
13	1	0457 365 001	Current connection	
18	1	0455 048 001	Insulating tube	
19	1	0455077003	Drive unit with pulse transducer	
21	4	0459 441 880	Gear wheel	
22	1	0459 440 001	Motor gear	(W)
28	2	0458 721 001	Locking nut	M6



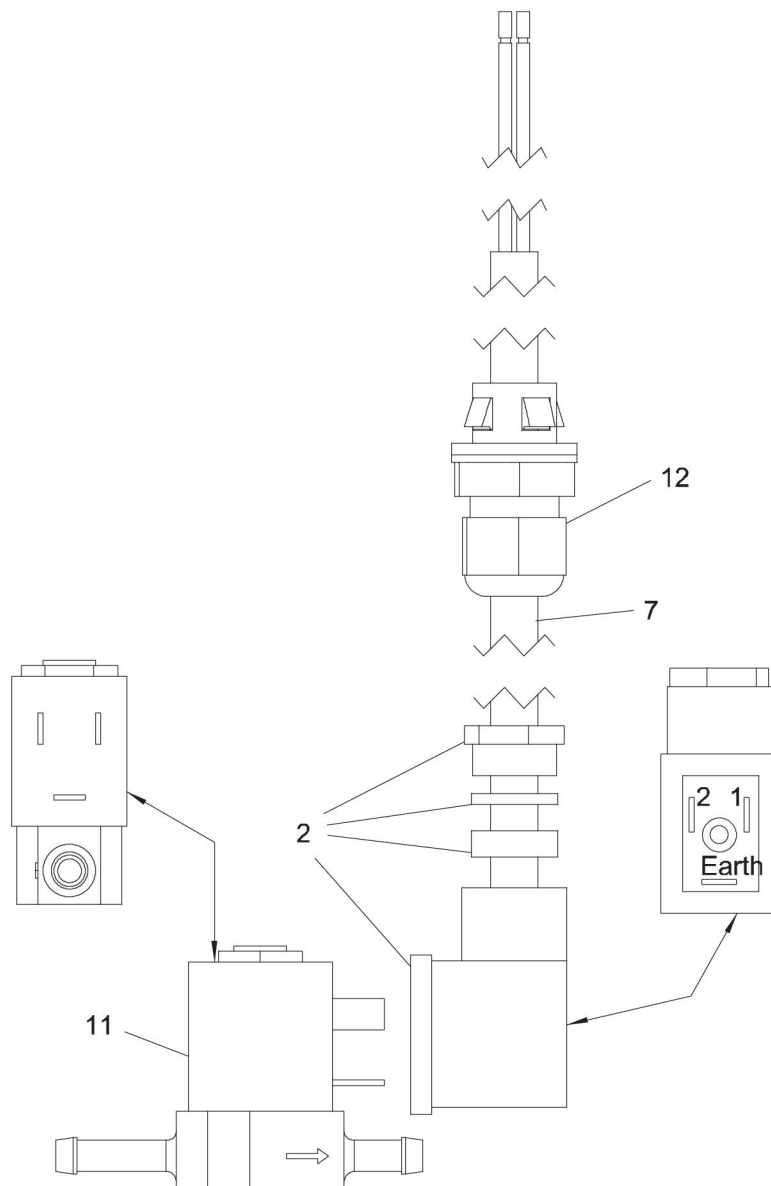
**Contact device – MTW 600, 250 mm**

Item	Qty	Ordering no.	Denomination	Notes
		<b>0457 460 881</b>	<b>Contact device</b>	<b>MTW 600, 250 mm</b>
1	1	0457 457 002	Cooling jacket	
2	1	0457 455 002	Contact tube	
3	1	0457 456 001	Insulation sleeve	
4	1	0457 451 001	Gas nozzle	
5	1	0457 452 001	Spatter protection	
6	1	0457 453 001	Centering sleeve	
7	1	0457 617 001	Allen screw	
8	1	0457 459 001	Insulation sleeve	
9	1	0457 458 001	O-ring	
10	1	0457 616 880	Water hose set	
11	1	0457 625 005	Contact tip	Ø1.2 (W)
	1	0457 625 007	Contact tip	Ø1.5 (W)
	1	0457 625 008	Contact tip	Ø1.6 (W)
	1	0457 625 009	Contact tip	Ø1.8 (W)
12		0457 458 002	O-ring	
13	1	0457 454 002	Wear insert (Steel spiral)	L=260, wire Ø1.0–1.6 mm (W)
	1	0457 620 002	Wear insert (Brass tube)	L=258, wire Ø2.0–2.4 mm (W)



## Solenoid valve with cable

Item	Qty	Ordering no.	Denomination	Notes
		<b>0461 238 881</b>	<b>Solenoid valve with cable</b>	
2	1	0157 259 001	Contact	
3		0262 612 802	Cable	
7	3	0262 613 329	Cable	
11	1	0193 054 002	Solenoid valve	42 V
12	1	0194 269 002	Bushing	





# A WORLD OF PRODUCTS AND SOLUTIONS.



For contact information visit [esab.com](http://esab.com)

ESAB AB, Lindholmsallén 9, Box 8004, 402 77 Gothenburg, Sweden, Phone +46 (0) 31 50 90 00

<http://manuals.esab.com>

